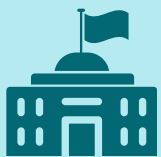







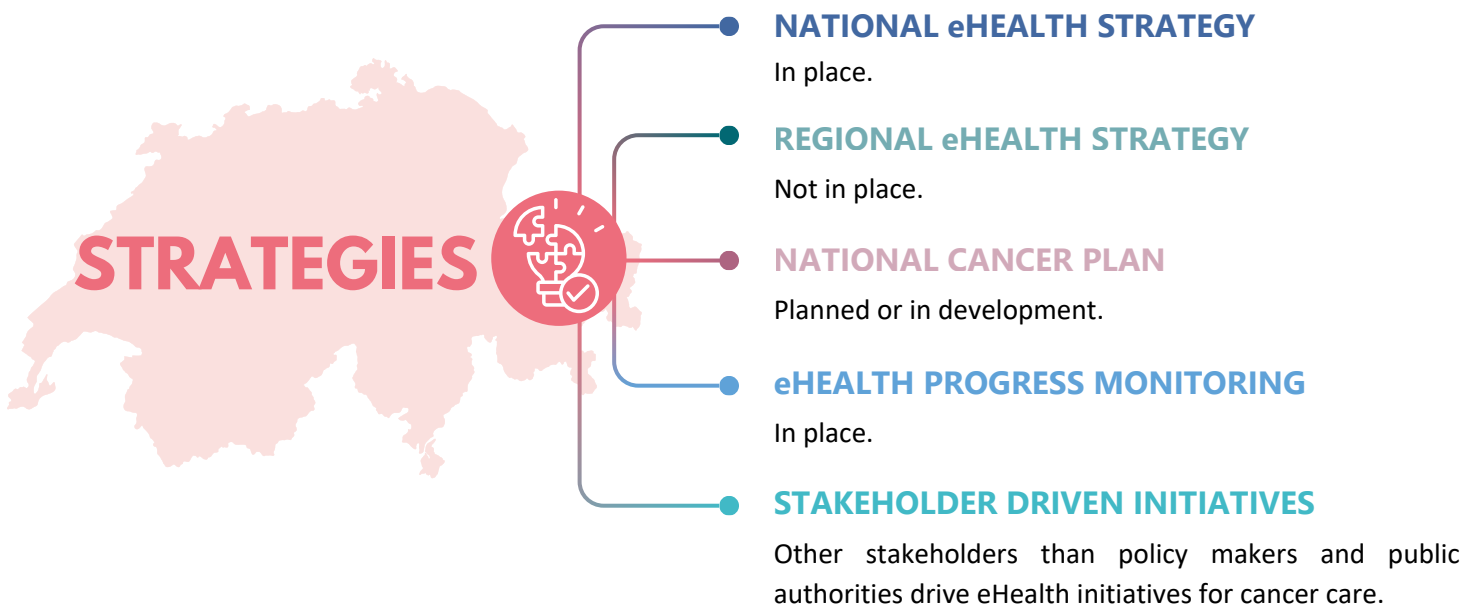
**GOVERNANCE**

eHealth programmes require political-governance strategies to achieve health policy goals. This is an overview of the eHealth governance ecosystem in Switzerland:

<p><b>Entity responsible for eHealth</b></p>  <p>The Federal Office of Public Health (FOPH)</p>	<p><b>National eHealth Governance Board</b></p>  <p>Not in place</p>	<p><b>Public eHealth Agency</b></p>  <p>eHealth Suisse</p>
<p><b>eHealth tools in the outpatient sector</b></p>  <p>Partially covered by public resources</p>	<p><b>eHealth tools in the inpatient sector</b></p>  <p>Partially covered by public resources</p>	<p><b>Comprehensive cancer centres working on eHealth</b></p>  <p>In place</p>

**STRATEGIES**

Switzerland has put in place specific strategies and policies for eHealth and cancer care:



## LEGISLATION

The level of integration of eHealth in different countries also depends on how legislation responds to innovation needs. In Switzerland, telemedicine, cancer prevention and eHealth cancer care is regulated by:



Note that where no specific legislation is in place, commonly, general legislation is applied.

## CANCER SPECIFIC eHEALTH SOLUTIONS

A number of digital solutions are available in some countries for cancer patients. Some of them are commercial, whereas some others are offered and recommended by national public healthcare systems. In some countries, governmental institutions provide a list of solutions, such as eHealth apps, for cancer patients. In Switzerland:

### RECOMMENDATIONS

No websites or other resources recommended to the public are in place.

### CERTIFICATIONS

Certification or quality approval processes to assess digital tools reliability are in place.



**For more information visit:** [ecanplus.eu](http://ecanplus.eu) or [Switzerland's original data survey](#).

Disclaimer: Data obtained from public sources. Data reviewed by country expert(s). Last updated: April 2026.